



COMPANY PROFILE

PT. APINDO MITRA **SELARAS**

WELCOME

PT. APINDO MITRA SELARAS, is a highly diversified, multidisciplinary suppliers, machinery and contractor leader in chemical, power plant and others segment industr. Our team has earned its place in today's competitive market through a combination of our core beliefs and the consistent delivery of superior services and quality products. The individualized care and unwavering attention that we bring to all of our projects are deciding factors in why our client continuously choose us.

PT. APINDO MITRA SELARAS, crew of skilled and experienced professionals combined with our unparalleled dedication and complete client focus have been a sureway to make every project a succes.



**MECHANICAL
JOBS**



SERVICE



MAINTENANCE





POWER TRANSMISSION

- a. Belt & Pulleys
- b. Chain & Sprockets
- c. Couplings
- d. Gear Reducers
- e. Electric Motors

PUMP

- a. Multistage Pumps
- b. Diaphragm Pumps
- c. Lobe Pumps
- d. Submersible Pumps
- e. Peristaltic Pumps
- f. Positive Displacement Pumps
- g. Gear Pumps
- h. Piston Pumps
- i. Screw Pumps
- j. Others

VALVE

- a. Ball Valves
- b. Needle Valves
- c. Pinch Valves
- d. Butterfly Valves
- e. Gate Valves
- f. Diaphragm Valves
- g. Check Valves
- h. Globe Valves
- i. Plug Valves
- j. others

LIGHTING

- a. AC, DC & Solars
- b. Explosion Proof
- c. Flood Lights





SEALLING SYSTEMS

- a. Mechanical Seals
- b. Customized Oil Seals

INSTRUMENTATION

- a. Flow Measurement
- b. Level Measurement
- c. Pressure Measurement
- d. Multi Parameter Analyzer
- e. Energy Measurement

CONVEYORS

- a. Flat Rubber Conveyor
- b. Chevron Rubber Conveyor
- c. PVC Conveyor
- d. Sidewall Conveyor

ENVIRONMENTAL PRODUCT

- a. Dust Collector
- b. Rotary Air Lock
- c. Air Slide Fabric
- d. Parts



Experience

FABRICATION AND INSTALL STORAGE TANK CAP 1500KL



FURNACE CLEANING



PIPE, SEALLING SYSTEMS, PARTS AND INSTRUMENT INSTALLATION



FABRICATION FOR GAS PIPELINE



ELECTRIC MOTOR SERVICE



ALIGNMENT SHAFT



CONDITION MONITORING BEARINGS



MAINTENANCE SERVICES






POWER TRANSMISSION



Martin

Jmroller

 RongXing **DRIVING**



科宜环保
Sino Dust Collection

RYDE
RYDE ENVIRONMENT

SIEMENS

EVERGEAR[®]
DRIVING MACHINE



MIGHTY[®]
SIEANE[®]

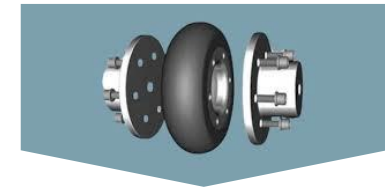


Power Transmission

BANDO

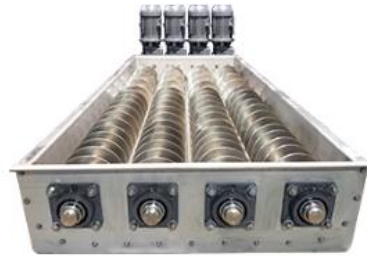
 **SINOCONVE**
SAVE TIME // SAVE MONEY

Anai



MAIN PRODUCT **MATERIAL HANDLING**

Martin



Screw Conveyor

Screw Conveyors are available as loose components or shop tested assembled.



Bucket Elevator

Martin manufactures Bucket Elevators in a variety of styles and configurations, including standard duty, mill duty, super capacity, high speed and more.



Drag Conveyor

Martin Drag Conveyors are available as Round Bottom, Flat Bottom, Mill Duty, and L & S Path.



Shaftless Screw Conveyor

This pipeless heavy-duty Screw Conveyor solves problems that the traditional Screw Conveyor cannot. No pipe, no hanger bearings -- fewer problems.



Modular Plastic Conveyor Screws

Plastic modules consist of a helical flight spiraling once around a hollow square hub.



Vertical Screw Elevator

Vertical Screw Elevators move material upward in a vertical path. Vertical elevators are also called vertical lifts.

MAIN PRODUCT POWER TRANSMISSION

Martin



Sprockets

Martin sets the standard for sprocket manufacturing with the most extensive offering of stock and made-to-order sprockets.

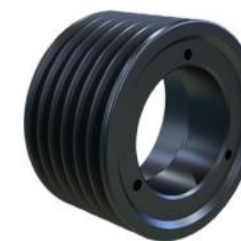
[LEARN MORE →](#)



Gears

Martin provides an extensive inventory of gears with quick deliveries and design capabilities to meet your application needs.

[LEARN MORE →](#)



Sheaves

Martin keeps the industry's v-belt drives running with stock and made to order sheaves made in North America.

[LEARN MORE →](#)



Bushings

Martin provides multiple bushing configurations for any industrial application allowing for easier installation and eliminating damage to the shaft upon removal.

[LEARN MORE →](#)



Synchronous Sprockets

Martin supplies synchronous sprockets and timing belt pulleys for any industrial application and high-performance belts.

[LEARN MORE →](#)



Couplings

Martin carries a complete line of shaft couplings in a wide range of materials to ensure shaft alignment and increase uptime.

[LEARN MORE →](#)

MAIN PRODUCT POWER TRANSMISSION

Martin

S.A.R

(Super Abrasive Resistant)



Formulated to provide superior wear and traction characteristics for longer service life and minimal down time

Drive and None Drive Ceramic



All ceramic tiles are bonded to the S.A.R compound and tested for a 100% rubber tear bond to insure zero tile toss during the time of operation.

FRAS-OR

(Fire Retardant, Anti-Static, Oil Resistant)



This compound contains all the required qualities to meet the international standards for safety and performance

Product Characteristic

- Available in 1.64 meter lengths as standard
- Complete installation packages cut to size
- Products formed to meet customers' radial requirements



MAIN PRODUCT POWER TRANSMISSION



HELICAL GEAR MOTOR

Inline Helical Gear Motors Helical Bevel Gear Motors Helical Worm Gear Motors Industrial gear motors Planetary gearbox High power industrial gearbox worm gearbox ...



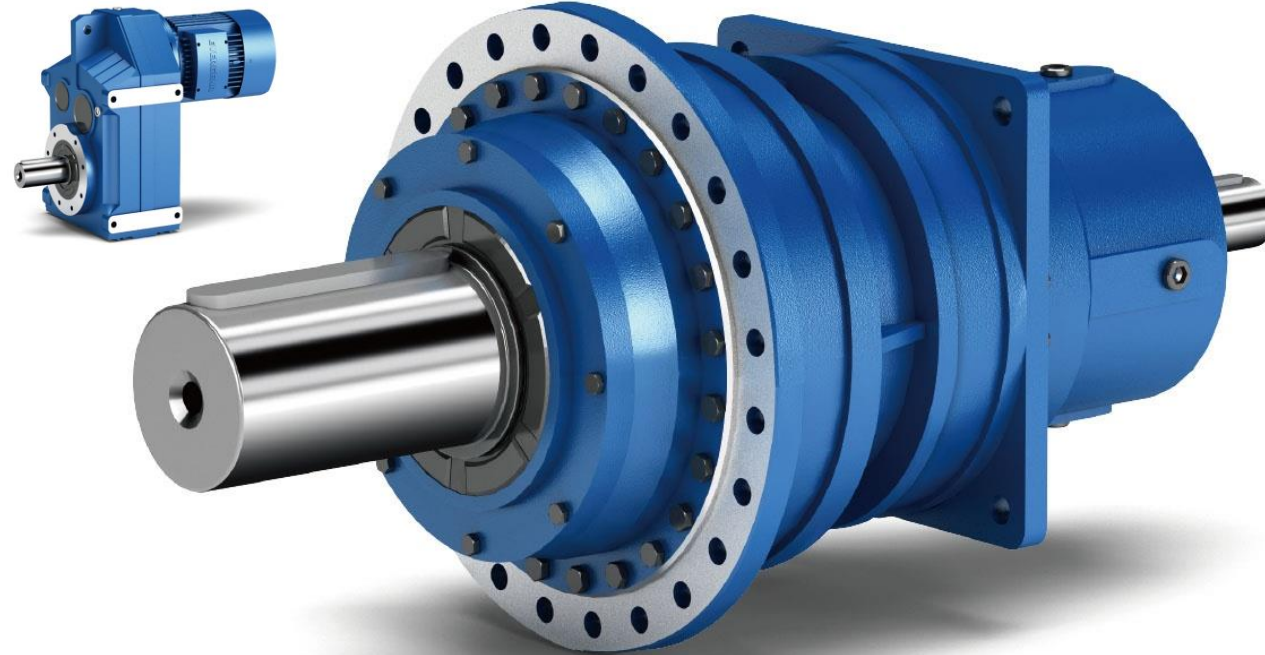
INDUSTRIAL GEARBOX

High Power Industrial Gearbox Solid Output Shaft Industrial Gearbox Hollow Output Shafr Industrial Gearbox Vertical Mount Industrial Gearbox Industrial gear motors Planetary gearbox High power



PLANETARY GEARBOX

Big Ratio Planetary Gear Box High Power Planetary Gear Motor Vertical Mount Planetary Gear Motor Flange Mount Planetary Gear Motor Shrink Output Shat Planetary Gearbox



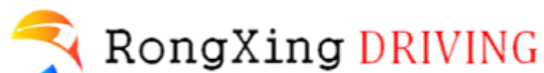
EVERGEAR[®]
DRIVING MACHINE



SGR[®]

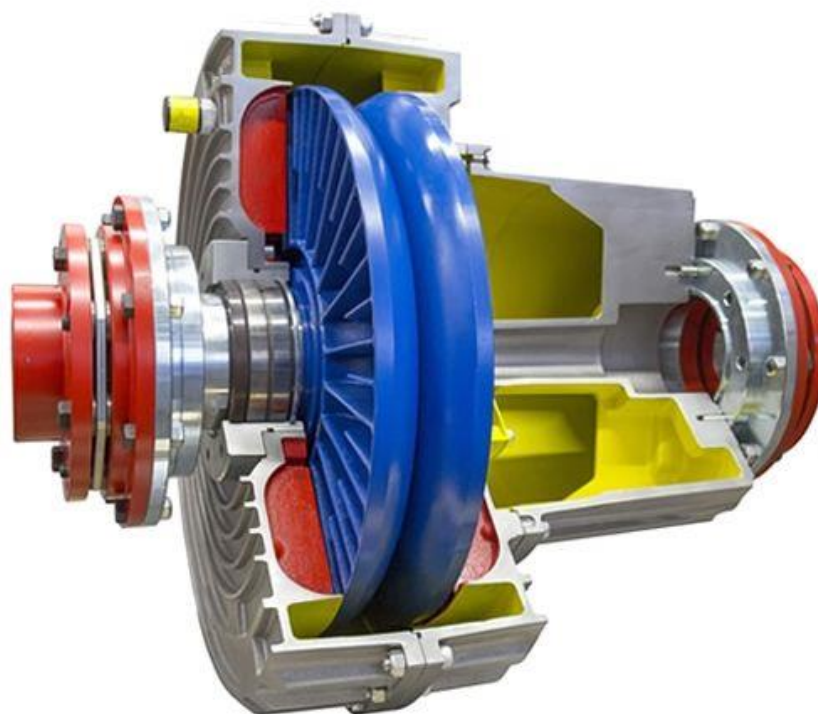
- ER Series Helical Inline Gear
- EK Series Helical Bevel Gear
- EF Series Helical Parallel Shaft
- ES Helical Worm Gear
- TA Series Shaft Mounted
- EQ series planetary gear
- Q Series Planetary Gear
- EH series Helical Industrial
- ETA series shaft mounted gear
- EB Series Right Angle bevel
- NMRV Series Worm Gear
- Z Series Bevel Gear Reducer
- MB Series Variable Speed
- X.B Series Cycloidal Reducer
- Three Phase Induction Electric

MAIN PRODUCT POWER TRANSMISSION



⚙️ CATEGORIES

- > Gear Coupling
- > Rigid Coupling
- > Elastic Coupling
- > Diaphragm Coupling
- > Universal Coupling
- > Grid Coupling
- > Chain Coupling
- > Other Couplings
- > Reducer



Disc Couplings
Rexnord Disc Couplings are built for the most critical power train systems, providing high reliability and low maintenance.



Elastomeric Couplings
Elastomeric Omega, Viva, and Wrapflex couplings are crafted for customer needs.



Fluid Couplings
Fluid couplings protect your machinery and ensure a longer life for your equipment.



Gear Couplings
Rexnord Lifelign is an interchangeable replacement option for other coupling brands.



Grid Couplings
With replace-in-place design, Falk, Steelflex grid couplings offer a low-maintenance solution.



Rigid Couplings
Tollok & Rexnord 3000 Series MCF rigid couplings are available in many sizes and capacities.



Torsionally Soft Couplings
CENTA Power Transmission provides reliable engineered flexible coupling solutions.



Torsionally Stiff Couplings
Torsionally Stiff Couplings with heavy duty performance for a resonance-free operation.



Coupling Parts & Kits
Coupling fasteners, elements, hubs, guards, gaskets, seals, spacers, center member assemblies.

MAIN PRODUCT POWER TRANSMISSION



Chains for feeder and unloader (FU type)



Bucket elevator chains (NBH type)



Bucket elevator chains (NSE type)

Drive Chains

- Precision roller chain
- Double pitch transmission chains
- High strength short pitch precision roller chains
- Oil field chains
- Chains of pumping unit
- Side bow chains
- Motorcycle chains
- Other drive chains

Engineering Chains

- Bucket elevator (Cement) chains
- Environmental protection equipment chains
- Paver machine chains (Asphalt chains)
- Trencher chains
- Welded chains
- Conveyor chains for coal washer
- Dedusting chains of power plant
- Other chains for engineering

Conveyor Chains

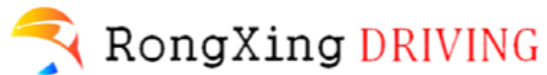
- Sider roller conveyor chain
- Top roller conveyor chain
- Conveyor chain(M series)
- Conveyor chain(FV series)
- Sugar machine chain
- Palm oil chain
- Conveyor chain for steel plant
- Conveyor chain used for rubber production
- Hanging conveyor chain
- Other conveyor chain

Leaf Chains

- Leaf chain for forklift and sky stacker
- Gall's chain
- Wrench chain

Car Parking Chains

- Roller chain
- Vertical circulation chain



Product Category

Product Features

Range of application fields. Generally applied in a harsh environment. Processes different materials according to different environments.

Get A Quote

PUMP PRODUCT



aikon



VALVES

DFT INC.
Check Valves & Control Valves

 aikon

 XALG

 DeZURIK



LIGHTING



All-in-one Solar Street Light (ETD-YL300-500)

Lights & Lighting, Street Lights



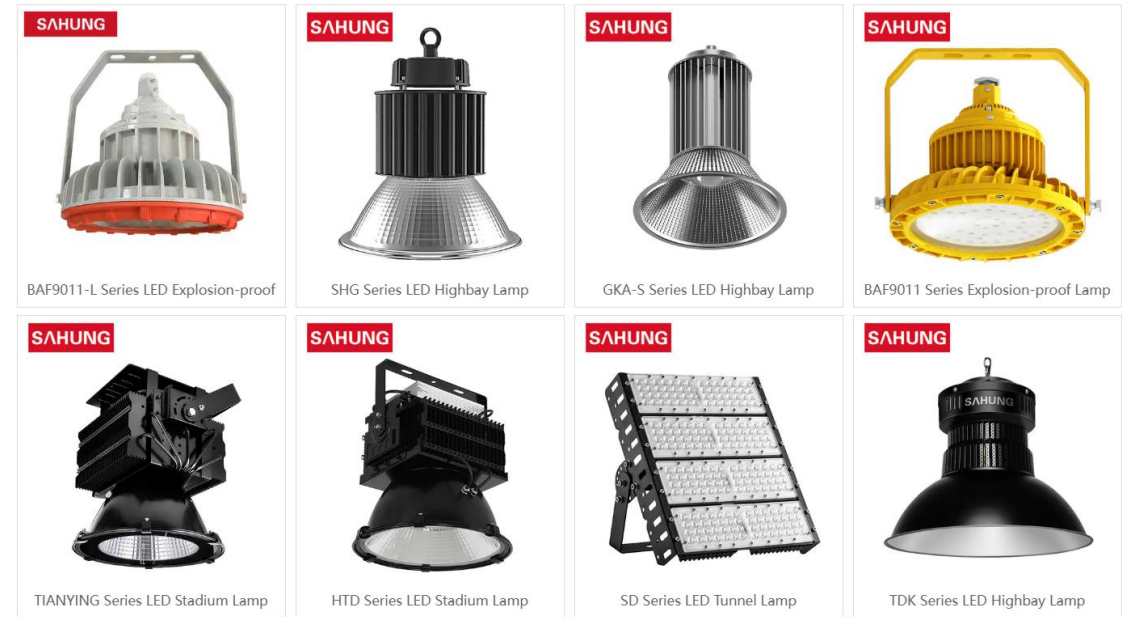
All-in-one Solar Street Light (FX40W-120W)

Lights & Lighting, Street Lights

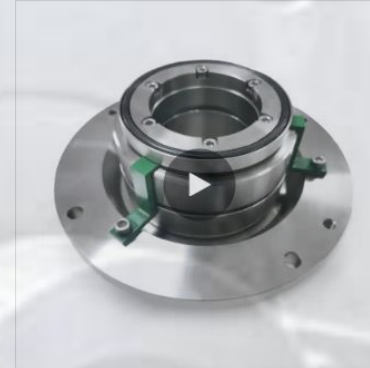


ALL IN ONE SOLAR STREET LIGHT-Reflective Cup Style/Lens Edition: ETD XH

Lights & Lighting, Street Lights



SEALLING SYSTEMS



High Quality Cartridge Mechanical Seal Replacement For SAF Seal-1



Formed Metal Bellows Seal Precision Mechanical Seal GL1B

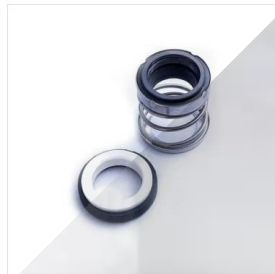


Quality Mechanical Seal LPS2 Double Cartridge Seal Replacement

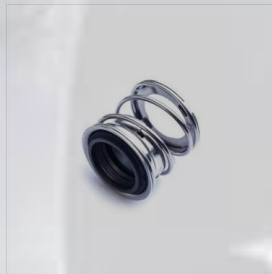
High-Quality 4610 Single Cartridge Mechanical Seal Replacement

Mechanical Seal 151 Type Agitator Mechanical Seal

Lepu Quality Mechanical Seal Wb2 PTFE Teflon Bellow Seal



mechanical seal type 21 from china mechanical seal factory lepu



multi-purpose mechanical seal TYPE 2 from lepu seal



Mechanical seal type1 from china pump seal supplier



Dual Mechanical Seal for Sulzero rAndritz pape rand pulp machine



Good Price Mechanical Seal 59u Water Pump Seal Supplier



Big Brand Mechanical Seal Water Pump Treater Seal 58u

INSTRUMENTATION

FLOTECH
Process Automation & Instrumentation



Flow Measurement

Electromagnetic / Ultrasonic / Coriolis



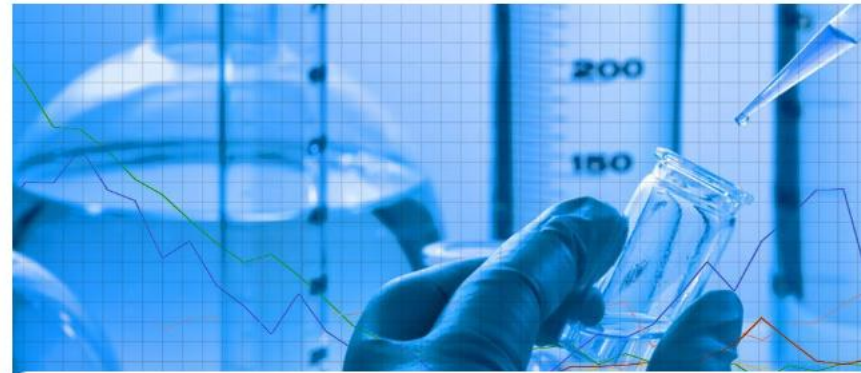
Level Measurement

Radar / Level Switch / Magnetic Float



Pressure Measurement

Gauge / Differential / Absolute



Multi-Parameter Analyser

Controllers / pH / Conductivity / Free/Total Chlorine / Turbidity



Energy Measurement

BTU Measurement System / AHU / FCU / Chiller Application

CONVEYOR BELTS & ACCECORIES



Turbine Pulleys

Turbine pulleys have an integral end disc that help prevent hub weld fatigue. This is important for certain applications.

[Catalog](#) | [Literature](#) | [Safety & Installation](#) | [Nomenclature](#) | [Online Training](#)



Take-Up Frames

Take-up frames will take up the stretch in the conveyor belt and keep proper tension at the drive pulley to reduce slippage.

[Catalog](#) | [Literature](#) | [Safety & Installation](#) | [Nomenclature](#) | [Online Training](#)



Shafting

Martin has the capability to provide conveyor pulley shafts and custom shaft detailing for special applications.

[Catalog](#) | [Literature](#) | [Safety & Installation](#) | [Online Training](#)



Profiled End Disc Pulleys

Profiled end disc pulleys are engineered to offer an efficient and improved alternative to standard, mine and quarry duty drum pulley and simplify the selection as they can be used in a wide range of applications from standard, mine and quarry duty, thus reducing your replacement inventory. Instead of deciding what might be the best pulley for your application, now you have one choice that conveys them all.

[Product Search](#) | [Catalog](#) | [Literature](#) | [Safety & Installation](#) | [Nomenclature](#) | [Online Training](#)



Clean Flight® Wing Pulleys

Martin conveyor pulley division introduces the new, Clean Flight® wing pulley. The Clean Flight® wing pulley merges the existing technology from martin's well known product groups: the pulley and screw conveyor.

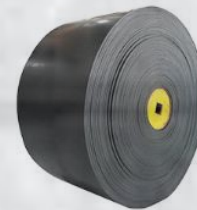
[Catalog](#) | [Literature](#) | [Safety & Installation](#) | [Nomenclature](#) | [Online Training](#)



Heavy-Duty Drum Pulleys

Drum pulleys are manufactured from thick wall pipe or tubing, with a crowned face or flat face. Martin has standard duty, quarry duty, mine duty and machined drum pulleys.

[Product Search](#) | [Catalog](#) | [Literature](#) | [Safety & Installation](#) | [Nomenclature](#) | [Online Training](#)



Rubber conveyor belt



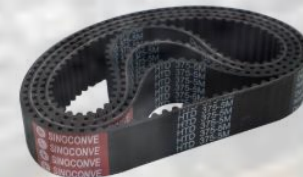
Chevron conveyor belt



Sidewall conveyor belt



Rubber v belt



Ribbed belt



ENVIRONMENT PRODUCT

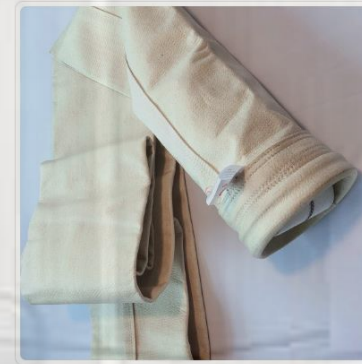


科宜环保
Sino Dust Collection

RYDE
RYDE ENVIRONMENT



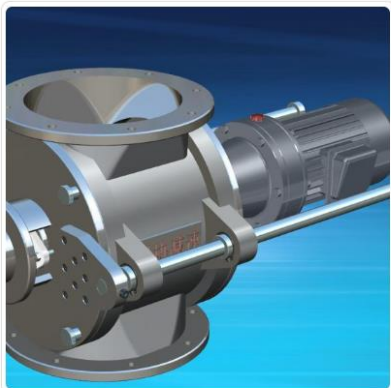
Ptfе coated antistatic nomex felt filter bag



Foundries fms dust collector filter bags for asphalt plant



For dust collection, acrylic filter bag



Powder airlock feeder ss304 blow-through rotary airlock valve



Cement feeder valve chain type stainless steel alimentador rotativo



Granular discharge, customized rotary valve casting/ 304/316L steel rotary valve



Professional filter bag dust collectors collector de polvo industrial



high flow pulse shot blasting bag-type pulse dust collector



Collector polvo design dust control systems woodworking dust collection

FERROUS & NON FERROUS ALLOYS PRODUCT

By Categories

- » Carbon Steel
- » Stainless Steel Pipe
- » Stainless Steel Bar
- » Stainless Steel Sheet
- » Stainless Steel Coil
- » Aluminum Products



JSTISCO

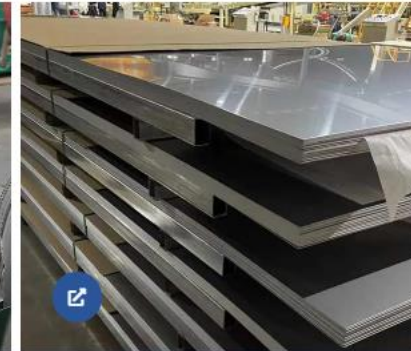


山东鸿信新材料有限公司
Shandong Hongxin New Material Co., Ltd



Stainless Steel Coil, 301 Stainless Steel Coil, 303
Stainless Steel Coil, 304L Stainless Steel Coil 304/2B
Stainless Steel Coil

Stainless Steel Coil



Stainless Steel Sheet Cut to Size, Stainless Steel Plate,
Stainless Steel Sheet Metal, Stainless Steel Diamond
Plate

Stainless Steel Sheet



Stainless Steel Flat Bar, Stainless Steel Rod, Stainless
Steel Round Bar, Stainless Steel Hex Bar, Stainless
Steel Square Bar, Stainless Steel Angle Bar

Stainless Steel Bar



Stainless Steel Tube, Stainless Steel Pipe, Stainless
Steel Exhaust Pipe, Stainless Steel Flex Pipe, Stainless
Steel Pipe Fittings, Stainless Steel Pipe Elbow

Stainless Steel Pipe



The stainless steel strip is simply an extension of the
ultra-thin stainless steel plate

Stainless Steel Strip



Stainless Steel Cable, Stainless Steel Wire Rope, 304
304L 316 316L 420 430 320 904L Available.

Stainless Steel Wire

LUBRICATION SYSTEMS

JIANHE

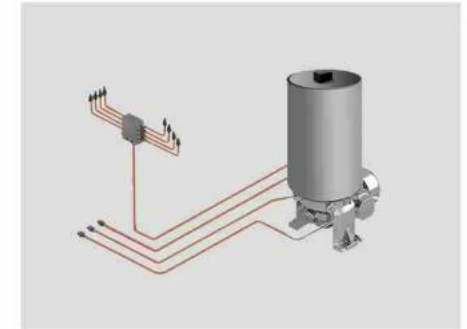
HYMA



Single-Line Lubrication System



Dual-Line Lubrication System



Multi-Line Lubrication System



Progressive Lubrication System



Central Lubrication System



Automatic Lubrication System

CONVEYOR (table model)



Products


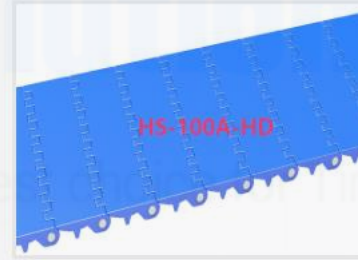
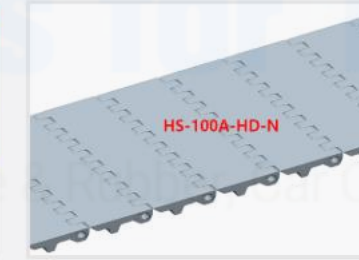

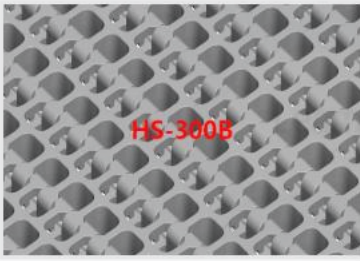
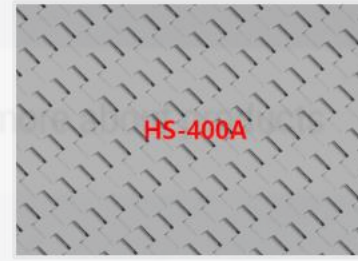
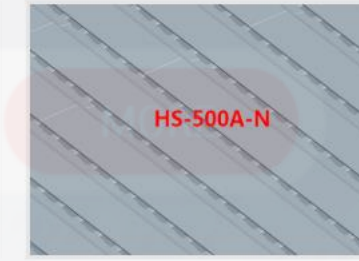
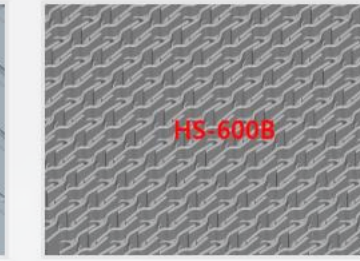
Modular Plastic Belt




Plastic Chains Belt

Conveyor Accessories



Modular Plastic Belt
MORE →

 <p>HS-100A</p>	 <p>HS-100A-HD</p>	 <p>HS-100A-HD-N</p>	 <p>HS-200A</p>
Series HS-100(50.8mm Pitch)	Series HS-100-HD(50.8mm Pitch)	Series HS-100-N(50.8mm Pitch)	Series HS-200(25.4mm Pitch)
 <p>HS-300B</p>	 <p>HS-400A</p>	 <p>HS-500A-N</p>	 <p>HS-600B</p>
Series HS-300(45.0mm Pitch)	Series HS-400(10.0mm Pitch)	Series HS-500(25.4mm Pitch)	Series HS-600(25.4mm Pitch)

 <p>HS-200 SERIES</p>	 <p>HS-1873-EL 90 SERIES</p>	 <p>HS-F3000A SERIES</p>	 <p>HS-1050 SERIES</p>
Plastic Chains	Plate Top and Gripper Chains	Knuckle Chain	Side Flexing Chains Belt
 <p>HS-2600-O SERIES</p>	 <p>HS-1100-63 SERIES</p>	 <p>LBP Chains</p>	 <p>HS-HD 5827M-EL SERIES</p>
Case Conveyor Chains	Flexible Chains	Plastic LBP Chains	Stainless Steel Chains belt

EXPANSION JOINT

LZJOINT® OEM

CY CHONGYOU
RUBBER & PLASTIC PRODUCTS

昌宏晟
CHANGHONGSHENG

信奇管道
XINQI PIPELINE



Single sphere stainless steel flanged flexible PTFE lined NBR or EPDM rubber expansion joint

Rubber expansion joints used to absorb and recuperate the deformations in the pipeline.

[Discover →](#)



Carbon Steel Flanged Expansion Concentric Flexible Reducing Rubber expansion Joint

Stainless steel flange connection white sanitary food grade silicone rubber expansion joint is mainly used in food pipe field.

[Discover →](#)



Stainless steel flange connection white sanitary food grade silicone rubber expansion joint

Stainless steel flange connection white sanitary food grade silicone rubber expansion joint is mainly used in food pipe field.

[Discover →](#)



Customizable stainless steel flange connection double sphere rubber expansion joint

The point of using dummy text for your paragraph is that it has a more-or-less normal distribution of letters, making it look like readable English.

[Discover →](#)



Flange connection general stainless steel compensator metal bellow expansion joint

The point of using dummy text for your paragraph is that it has a more-or-less normal distribution of letters, making it look like readable English.

[Discover →](#)



Water pipe emergency repair high pressure stainless steel leak pipe repair clamp coupling

The point of using dummy text for your paragraph is that it has a more-or-less normal distribution of letters, making it look like readable English.

[Discover →](#)

Choose Trust Choose

Shop Now

SLEWING BEARINGS

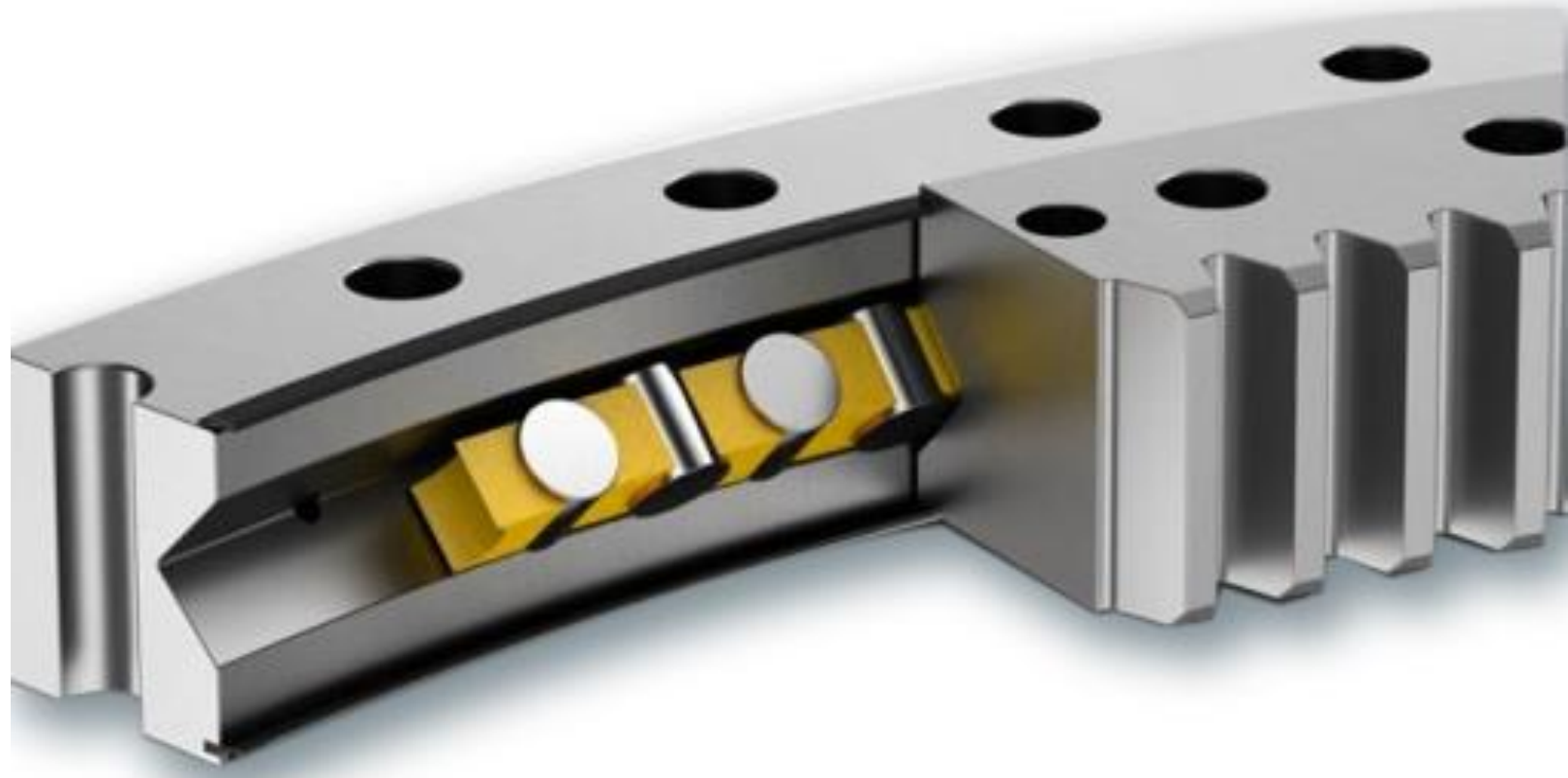
U-TRSM[®]

LDB[®] SLEWING BEARING
Since 1999



XZWD[®]

LYNBC[®]
NICE BEARING CO., LTD.



Selection and characteristics of slewing d...



Analysis of the high speed rotating double...



30855 slew drive assembly: precise protect...



High load slewing drive solution for deep ...

CLUTCH BEARINGS



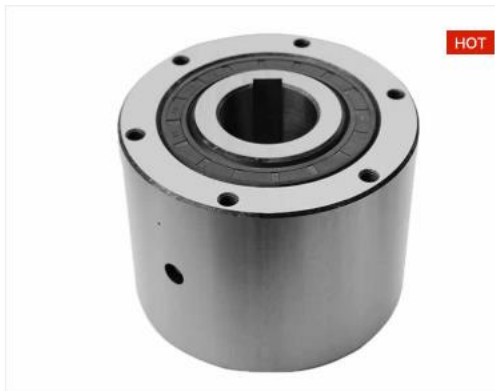
BSEU Series Cam Clutch Backstop Clutch



LD SERIES CAM CLUTCH



CSK, CSK 2RS One Way Bearing Sprag Clutch



Backstop clutch(cam clutch)MG,MI,MO,MR



Freewheel Backstop Clutch RSCI 20-130



RSCI 180-300 Overrunning Clutch Bearing Gearbox Clutch

PLAIN BEARINGS



Introduction

ZHEJIANG TOP BEARINGS CO., LTD. is a manufacturer and distribution of sliding bearings. Our products have been widely applied to more than 30 industries like automobile, engineering machinery, ...



QC Profile

To control quality strictly, we set up a complete quality management system (ISO9001 and ISO/TS16949) in the quality policy of "Top Quality, Top Credit, Sustainable Growth". Our quality and performanc...

Cast Bronze Bearings

Solid Lubricant Casting Bronze Bushing Bearing For Machine Tools



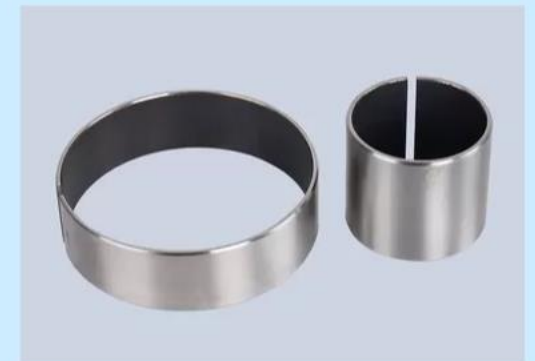
Plain Bush Bearing

Tin Lead Bronze Alloy CuSn4Pb24 Bi Metal Bearings Carbon Steel HB 45-70



Plain Bush Bearing

SF-1 Plain Bush Bearing Bushing , PTFE Self Lubrication Multilayer Composite Bearings



OTHERS PRODUCT SUPPORT



HOSES & HOSE FITTINGS

- general purpose tubing
- compressed air hoses
- air ducting
- vacuum hoses
- fluid transfer hoses
- layflat hoses
- hook & camlock fittings
- food grade hoses
- hose & T bolt clamps
- cable ties



PNEUMATICS

- push in fittings
- silencers & mufflers
- food grade fittings
- blow guns & gauges
- tubing & accessories
- actuators & valves
- pressure regulators
- pressure switches
- filter & regulator units
- lubricating units

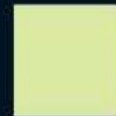


OTHERS PRODUCT SUPPORT



FASTENERS

- stainless steel fasteners
- high tensile fasteners
- anchor bolts
- grub screws
- humpback pins
- circlips & wave washers
- screws & washers
- staples & rivets
- chemical anchors
- threaded rod



ASSORTMENT KITS

- o ring kits
- roll & split pin kits
- circlip kits
- spring kits
- grub screw kits
- key steel kits
- brass fitting kits
- stainless steel kits
- seal kits
- custom made kits

OTHERS PRODUCT SUPPORT



WORKSHOP MACHINERY

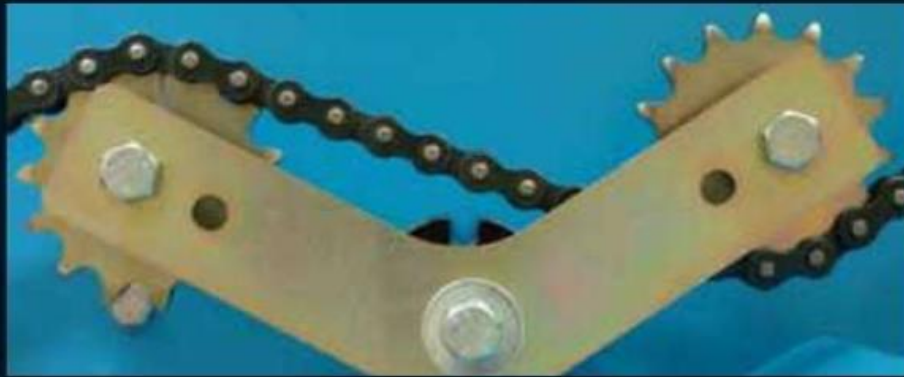
- bearing induction heaters
- drill press
- pipe & bar benders
- bench grinders
- belt grinders & liners
- hydraulic press
- workshop fans
- brick saws
- wet & dry vacuums
- air compressors



INDUSTRIAL HARDWARE

- counters & hour meters
- rubber cushions & mounts
- gauges & switches
- clamping elements
- hinges & handwheels
- shim roll & plates
- handles & knobs
- quick adjustable handles
- springs & gears
- gas struts

OTHERS PRODUCT SUPPORT



TENSIONING DEVICES

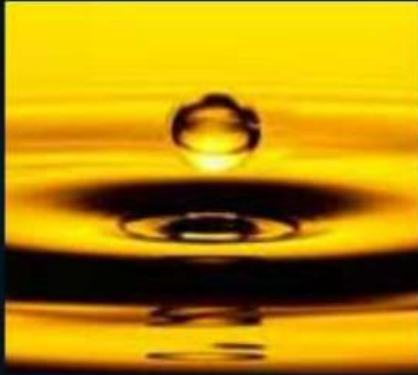
- chain tensioners
- idler rollers
- belt tensioners
- idler sprockets
- sprocket tensioners
- tension arms
- roller tensioners
- plastic & metal tensioners
- slide block tensioners
- tensioning units



SHAFT LOCKING DEVICES

- taper lock bushes
- solid & split shaft collars
- QD bushes
- stainless steel shaft collars
- weld on hubs
- cone ring locking rings
- hydraulic locking bushes
- key steel & woodruff keys
- cap screw locking bushes
- custom sleeves & spacers

OTHERS PRODUCT SUPPORT



LUBRICANTS

- bearing grease
- open gear grease
- chain lubricants
- assembly pastes
- anti seize
- food grade lubricants
- wire rope lubricants
- gear & hydraulic oils
- aerosol lubricants
- cutting & tapping fluids



LUBRICATION EQUIPMENT

- grease nipples
- grease guns
- header blocks
- automatic lubricators
- oil storage containers
- drum trolleys
- lubrication hose reels
- mobile lubricating kits
- oil transfer systems
- custom lube systems



APINDO MITRA SELARAS

Head Quarter

Jl. Raya Pondok Cilegon Indah
Ruko Cilegon City Square Blok I No.07
Kedaleman – Cibeber
Cilegon, Banten, Indonesia
42441

Logistic

Kompl. LIGA Blok D5-05 & D4-17
Waringin Kurung – Kramatwatu
Serang, Banten, Indonesia
42442

Contact :

Phone : 0254 - 385620
Fax : 0254 - 376157
Email : sales@kseindonesia.com
: info.apindoms@kseindonesia.com
: cso@kseindonesia.com
Website : www.kseindonesia.com

